

# **iveR Project**

**Domestic, Sexual & Gender-based Violence  
Training. Education. Research.**

## January 2024 Community of Practice Newsletter



This January we were absolutely thrilled to host our Inaugural Community of Practice Event

[Click here to read full report on this event.](#)

---



This event also saw the official launch of the new **RiVeR Project** website and we were delighted to be joined virtually by **Minister for Justice Helen McEntee** via a recorded video message which was shown on the day to all attendees.

[Click here to view the website](#)

## Other Events and Notices From Our Community

Hosted by The Lord Mayor Of Dublin  
Mansion House (Oak room)  
Friday the 9th of Feb  
1pm to 3pm

RSVP: [seekingsafetyireland@lcdat.ie](mailto:seekingsafetyireland@lcdat.ie) by 5th Feb

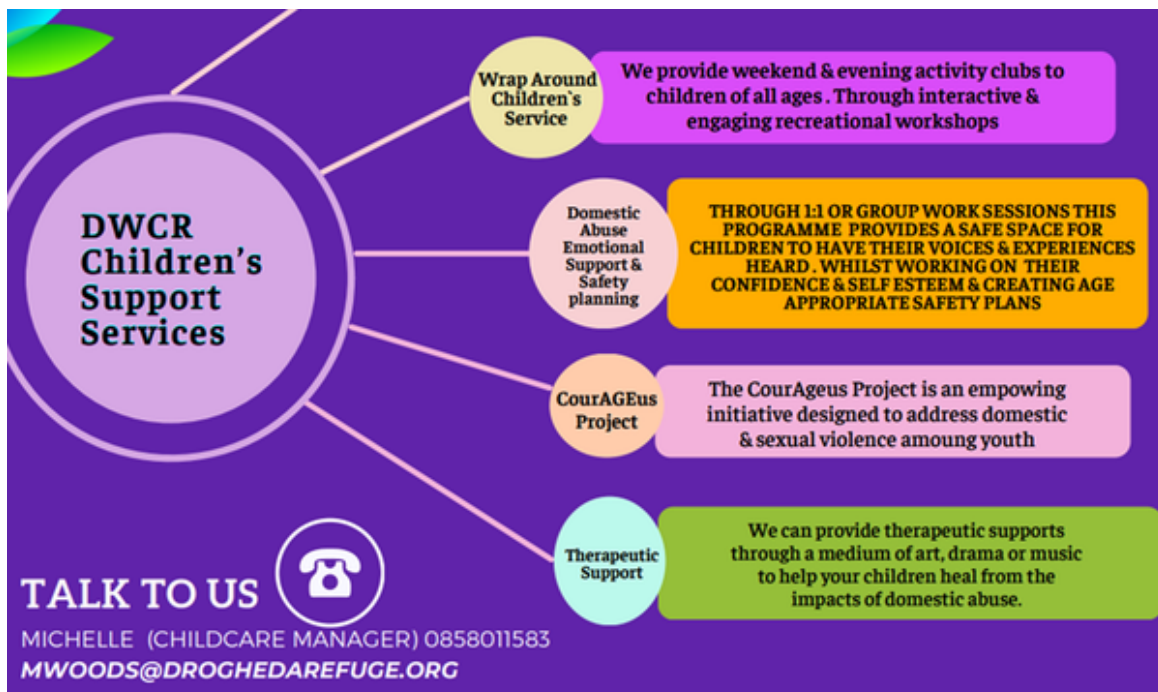
Seeking Safety Ireland

Peer Evaluation launch

HSE, REDDOOR, SAOL project, Ruhama, Roscommon women's network, Sophia Housing

**Seeking Safety Ireland** is a ground-breaking initiative which enables women to help other women to overcome complex needs. The programme, which supports women with a dual-diagnosis of PTSD (following domestic, sexual or gender based violence) and addiction, is innovative in that it is peer-led. The evaluation report is women-centred and reinforces the importance of seeking treatment for mental health conditions, emphasising the need for comprehensive, integrated care. The women involved in implementing the programme all have lived experience of both issues and will present their findings on the day. The Seeking Safety Ireland pilot programme is delivered by seven services across Ireland (Ballymun Star, Ruhama, SAOL, Ballyfermot Star Roscommon Women's Network, The Reddoor project and Sophia Housing) and is funded by the HSE.

**RSVP: [seekingsafetyireland@lcdat.ie](mailto:seekingsafetyireland@lcdat.ie) by 5th Feb**



Click here for more details from DWCR



**Drogheda Women's & Children's Refuge Centre** are delivering a series of workshops to young people from 14 to 17 years old on the red flags and responses to domestic abuse. For schools or group participation contact [cjohnson@droghedarefuge.org](mailto:cjohnson@droghedarefuge.org) or [mwoods@droghedarefuge.org](mailto:mwoods@droghedarefuge.org) or click the below for more information: <https://droghedarefuge.org/>

# Freedom



Drogheda Women's & Children's  
Refuge Centre C.L.G.

## P R O G R A M M E



# 12

week support group for women who  
have experienced domestic abuse

**The Freedom programme  
provides the following:**

- Information and support around healthy and unhealthy relationships
- Tactics that can be used in abusive relationships
- The impact of domestic abuse on children
- Early warning signs of an abusive relationship

Call us on 041 984 4550

Email:

[outreachsupport@droghedarefuge.org](mailto:outreachsupport@droghedarefuge.org)

[amy@droghedarefuge.org](mailto:amy@droghedarefuge.org)

[mleonard@droghedarefuge.org](mailto:mleonard@droghedarefuge.org)

<https://droghedarefuge.org/>

# HEA

**AN tÚDARÁS um ARD-OIDEACHAS  
HIGHER EDUCATION AUTHORITY**

**email:** [info@riverproject.ie](mailto:info@riverproject.ie) **Twitter/X:** [@RiverProject\\_ie](https://twitter.com/RiverProject_ie)